

Intel® Reader

Quick Start Guide

Read Me First

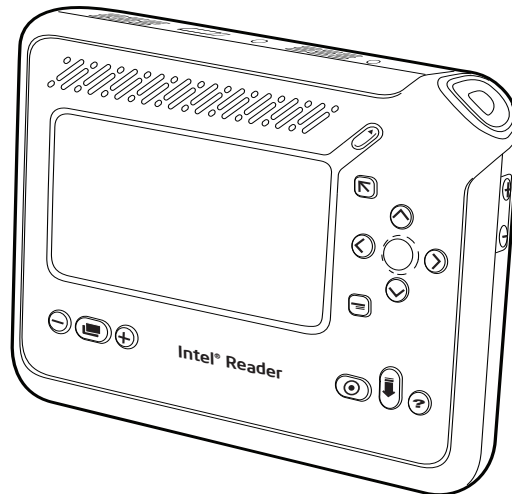


WARNING: Do not rely on the Reader as a sole means of reading safety or hazard warnings, medication labels or instructions, food labels or ingredient lists, or financial or legal documents, when a reading inconsistency or misreading of written text might put you at risk of personal injury or economic harm. The Reader is designed to convert text into speech, and is not intended for reading primarily mathematical, scientific, or financial data. For such critical reading, always use a backup means of confirming that you understand the writing, such as an alternative accessible format or another person. For complete safety information and warnings, refer to the safety and warranty booklet that comes with the Reader.

Welcome

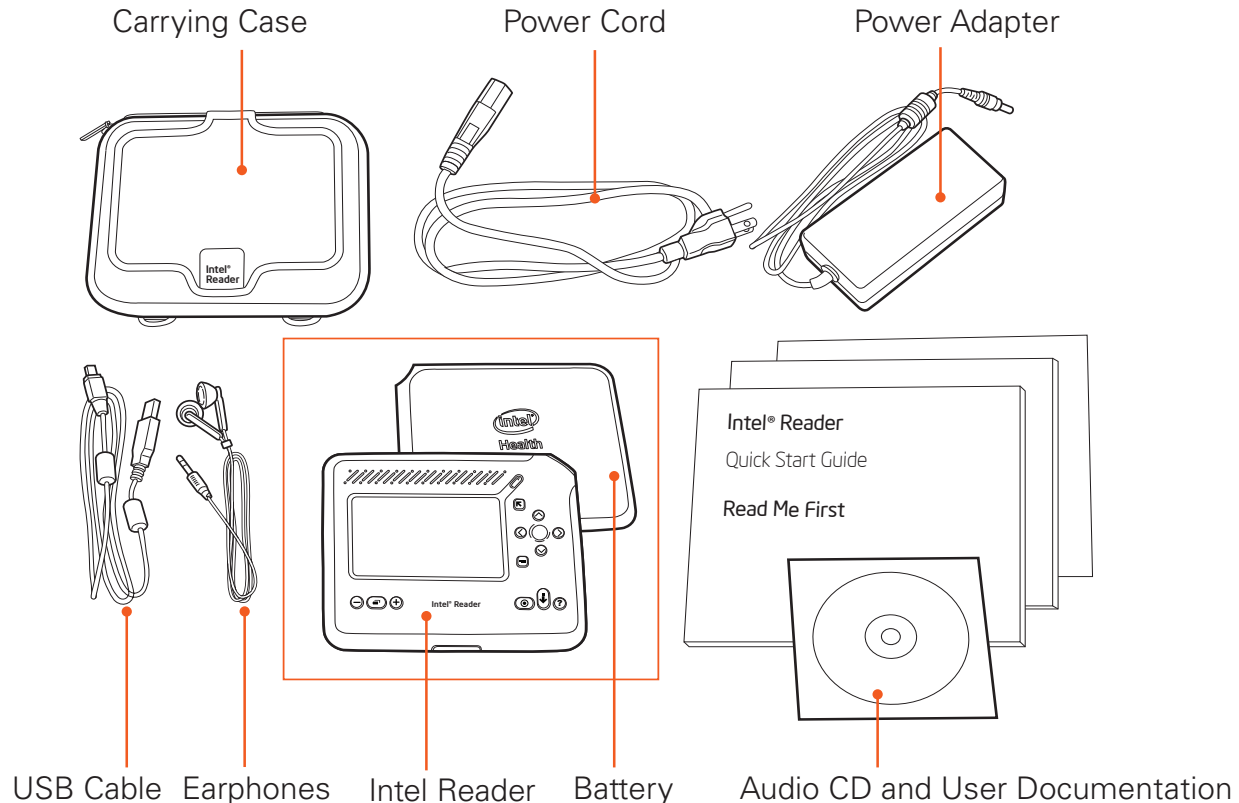
The Intel® Reader combines a high resolution camera with text-to-speech (TTS) software, to convert printed text to digital text, and then read it aloud to you. The Reader can convert a variety of materials, including books, magazines, and even daily mail. The Reader is small enough to take with you, and discreet enough to use anywhere, anytime.

This Quick Start Guide introduces you to the Reader, and helps you quickly learn to capture and play text. For detailed information about these tasks, refer to the Reader User Manual, which you can find on the CD that accompanies the Reader, or in the Reader's **Help** menu. The User Manual also contains useful information about customizing your Reader, transferring text and audio files to and from the Reader, organizing your Reader files, and using all of the Reader's features.



Box Contents

The Reader box includes a Reader, battery, carrying case, power cord and power adapter, a USB cable, earphones, a safety and warranty booklet, a Practice Page, and a Quick Start Guide. It also includes an audio CD that contains the User Manual and Quick Start Guide in PDF format, and in audio and digital talking book formats.



Getting Started

1. Unpack the Reader and battery.

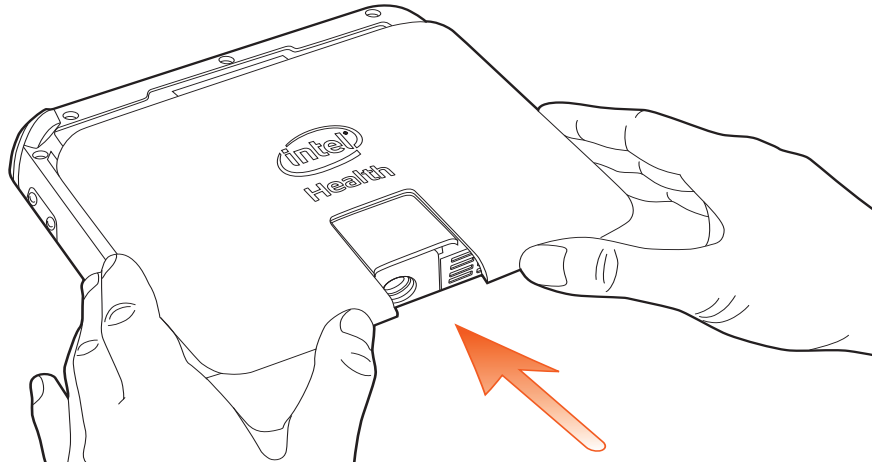
Remove the Reader and battery from the box.

2. Attach the battery to the Reader.

Lay the Reader with the display screen facing down, the angled corner at the top left, and the camera pointing toward you. Hold the battery pack with the angled corner at the top left.

Lay the battery on top of the Reader, aligning the left and right edges of the battery with the left and right edges of the Reader.

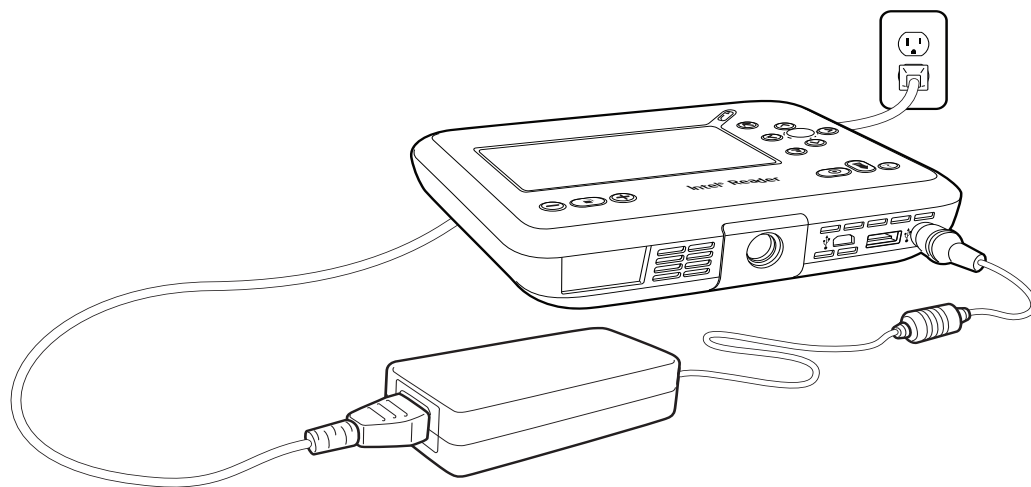
Slide the battery toward you, then push it away from you until it locks into place, being careful not to pinch your fingers as you do so.



3. Charge the battery.

Turn the Reader over so that the display screen is facing up and the camera is pointing toward you. Attach the power cord to the power adapter. Then, insert the power adapter plug into the power port. When the Reader's display screen is facing up and the camera is pointing toward you, the power port is at the far right of the camera. Plug the power cord into a power outlet.

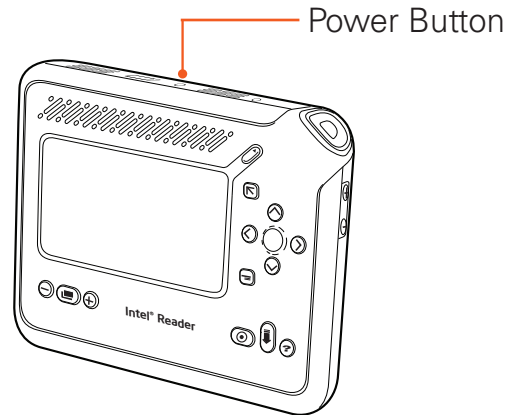
For optimal battery performance and life, it is recommended that you charge the battery to approximately 100 percent before using the Reader for the first time. A full charge takes approximately 3 hours.



You can leave the Reader plugged in indefinitely. You will not over-charge the Reader by leaving it plugged in, though you should unplug it if there is danger of an electrical storm, to prevent damage to the Reader.

4. Turn on the Reader.

Press the **Power** button for 1 to 3 seconds. **Power** is the round button near the center of the top edge of the Reader. If the Reader is plugged into a power outlet, the LED light beside the **Power** button is amber after you press **Power**. If the Reader is not plugged in, the LED is green.



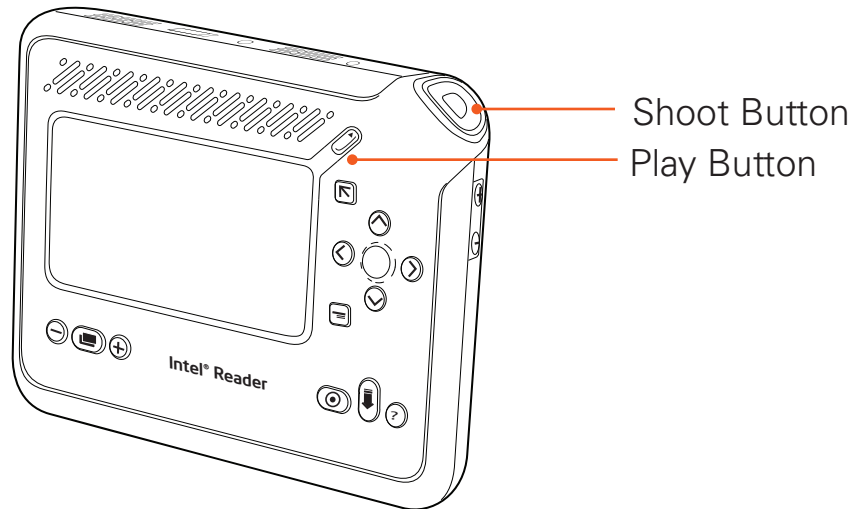
The first time you turn on the Reader, a message appears inviting you to play an introduction to the Reader. If you choose to hear the introduction, select **Yes** and press **OK**. The introduction begins playing. If you choose not to play the introduction, another message appears. Then the **Home** menu is displayed.

When the **Home** menu appears, the Reader announces "Home menu, Library."

Point, Shoot, Listen

Capturing and playing text with the Reader is as easy as point, shoot, listen. You use two buttons on the Reader to capture and play text: **Shoot** and **Play**.

The **Shoot** button is the large button on the angled corner of the Reader. To capture text, you press the **Shoot** button twice. The first time, you are placing the Reader in Shoot mode. The second time, you are capturing the text.



The **Play** button is the diagonal button above the upper right corner of the display screen. You press **Play** to listen to text or audio files. As you listen, you can press **Play** at any time to pause the playback. Then press **Play** again to continue playback.

To capture text and listen to the playback, follow these steps:

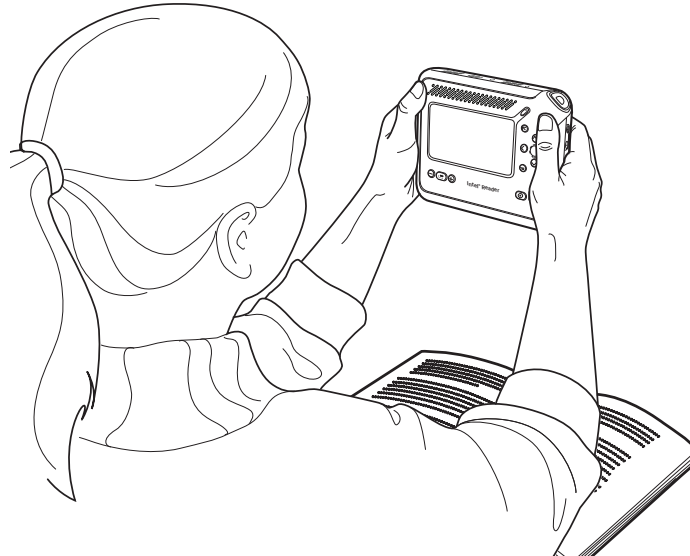
1. Enter Shoot mode.

Place the Reader into Shoot mode by pressing the **Shoot** button once.

2. Point.

Hold the Reader in front of you and above the text you wish to capture. Do not pull the Reader toward you. When you are seated, the Reader should be at approximately nose level. The camera lens is on the bottom edge of the Reader, so the bottom of the Reader should be pointed at the text. The display screen should face you.

For best results, hold the Reader so that the entire one- or two-page text fills the display screen. Adjust the position of the Reader until you can see all the text in the display screen.



3. Shoot.

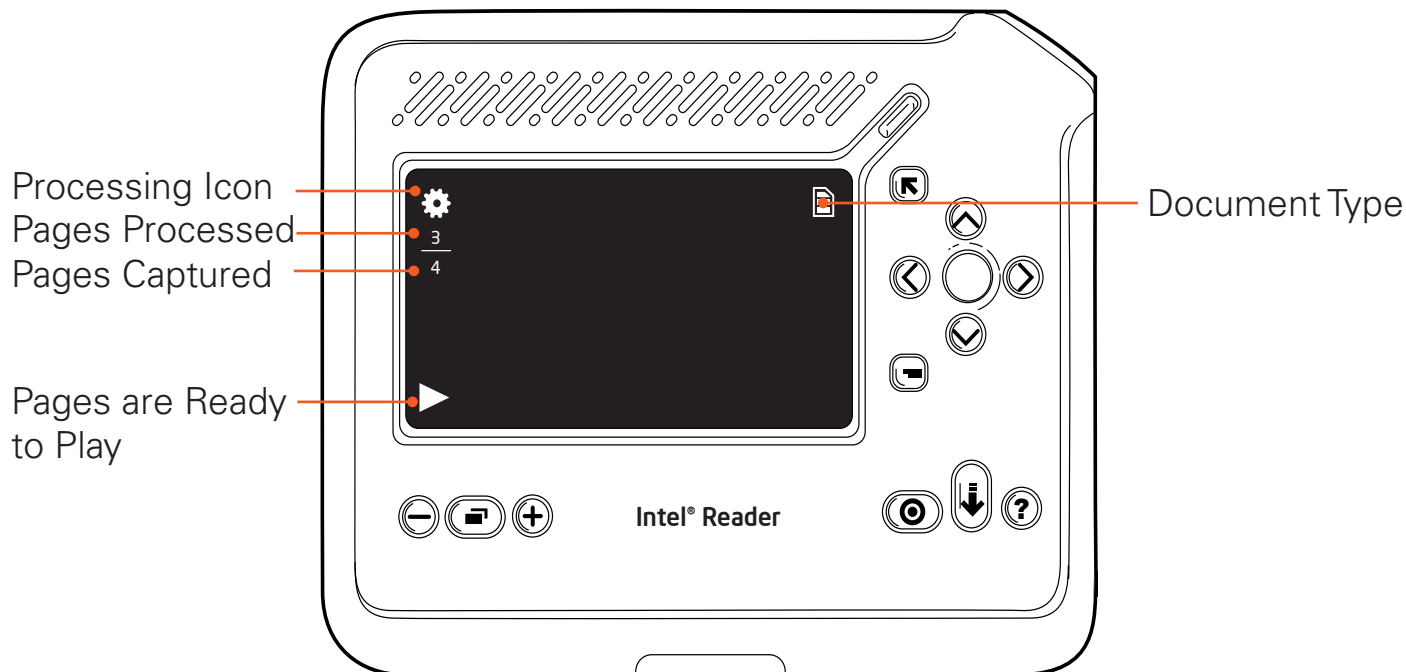
Press the **Shoot** button again to capture the text.



The Reader announces, "Focusing," if you have the menu reading option turned on. At this point, the camera is locking onto the text. The text does not need to be legible in the display screen in order for the camera to focus on it. Then you hear a ticking sound, and a sound like a camera's shutter click. A musical tone tells you that the image has been captured.

If you are using the display screen, a small gear icon appears at the upper left of the screen, to indicate that the Reader is converting the image into text. Several factors affect the speed of the conversion, including the size of the printed text, whether it contains images, and what fonts it uses.

Below the gear are two numbers, one above the other, separated by a bar. The bottom number is the total number of shots you have taken. The top number is



the number of pages that have been processed and are ready for playback. For the first page you capture, the top number is zero, and the bottom number is one, to indicate that one page has been captured, but the page is not yet ready to play.

An icon at the upper right of the display screen indicates that you are working with a text file. An hourglass icon may also be displayed as processing continues.

A right-pointing triangle appears at the lower left of the display screen, to show that the first part of the first page is ready to play. When the entire first page is ready to be played, the Reader announces, "Page one of one processed," if you have the menu reading option turned on. At the same time, a tone plays, to alert you that you can start listening.

4. Listen.

Press the **Play** button to listen to the text. **Play** is the diagonal button above the upper right corner of the display screen.

When you want to pause the playback, press **Play** again.



Tips for Good Results

- Hold the Reader straight and point the camera directly at the text. Holding the camera at a severe angle can distort the text image and corrupt the playback.
- To ensure proper focus, hold the Reader at approximately nose level when you are seated in front of the printed material. If the Reader is too close to or too far from the text being captured, the results will vary. Be sure to hold the Reader still when capturing an image, and allow the device to adjust to lighting conditions for a few seconds before shooting the first image. You can use the Practice Page that comes with the Reader, to become accustomed to holding the Reader and finding the right distance from the page.
- Ensure that there is some text or an image in the center of the material you want to capture. The camera uses text or images in that area to adjust focus.
- To help ensure clear images, position the Reader away from overhead lights, windows and desk lamps. Light that shines too brightly on the page can interfere with the Reader's ability to capture a good image.
- To capture only the text you want, remove extra items, such as unnecessary text or your fingers, from the camera's field of view. Hold or wear the lanyard when capturing an image, to prevent it from interfering with the camera lens or the flash.
- Use a blank piece of neutral-colored paper to cover any text or images that you do not want to capture.

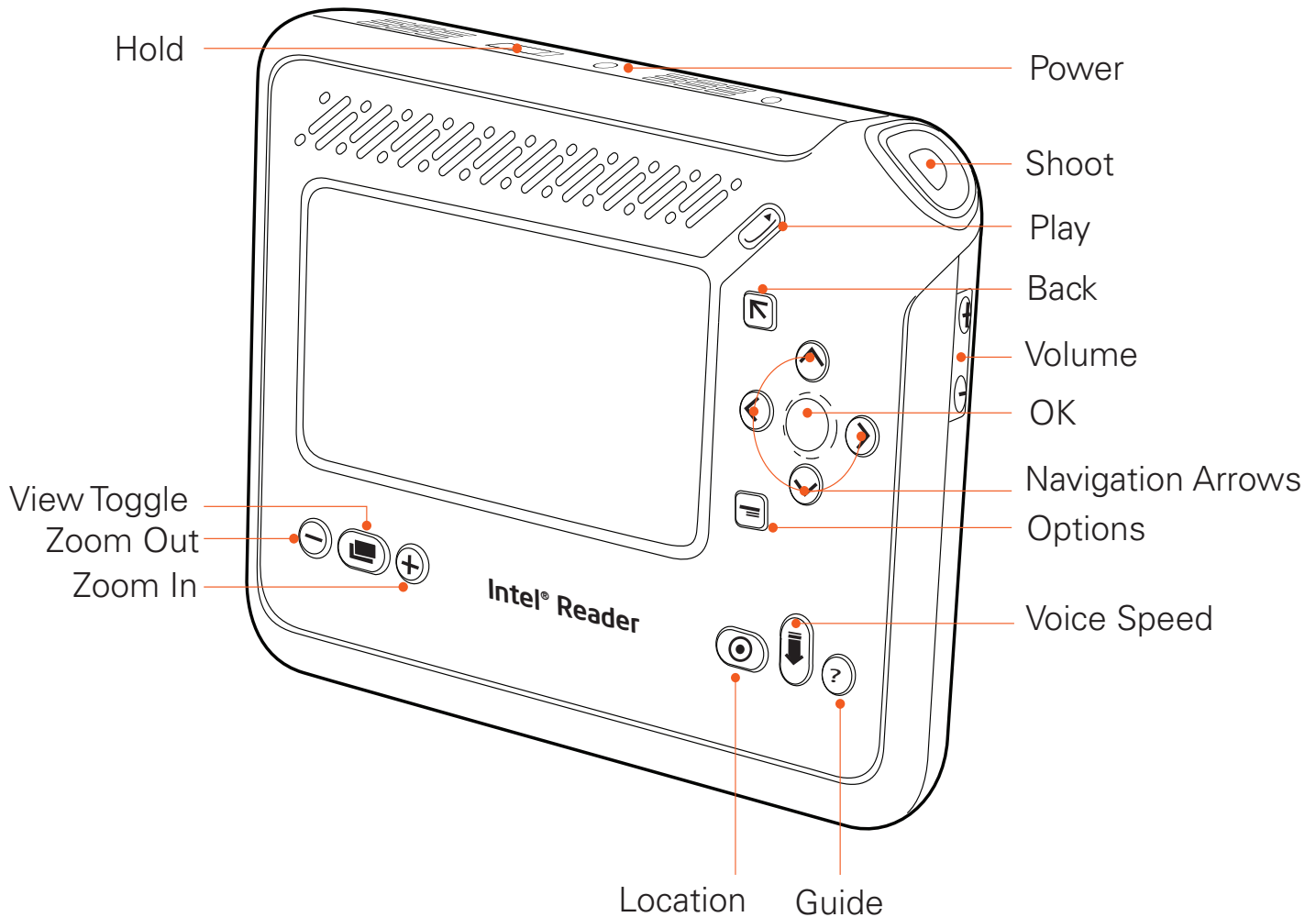
- Keep the camera lens free from smudges. For more information, refer to the section titled **Recommended Cleaning Techniques** in Appendix C of the Reader User Manual.
- Remember that you can capture multiple pages of a document before listening to the text. The Reader then processes all the pages in the background while you do other work. This is a great time-saving feature. If you prefer to hear your text immediately, press **Play** after you have captured all your pages.
- Lay the pages as flat as possible. The Capture Station is useful for flattening the pages of large texts, such as long books.

Reader Controls

This section describes the purpose of each control of the Reader. Before continuing, take a few moments with the Reader in hand, to familiarize yourself with these controls. For more information about any feature, refer to the Reader User Manual.

This section describes the top edge of the Reader as the edge that is on top when the display screen is facing you and the angled corner is at the top right.

Reader Controls



Controls for Turning On and Locking the Reader

Power: A round button at the center of the top edge of the Reader. Use the **Power** button as follows:

- When the Reader is completely turned off, press **Power** for 1 to 3 seconds to turn it on. The Reader emits a single start-up tone, and the start-up sequence begins. This sequence can take up to 60 seconds.
- To place the Reader in Sleep mode when the Reader is on, press **Power** for 1 to 3 seconds. To start the Reader when it is in Sleep mode, press **Power** for 1 to 3 seconds.
- To turn the Reader off, press **Power** for approximately 3 to 7 seconds. The Reader completes any unfinished processing, such as converting printed text to digital text. Then it announces "Turning off" as it shuts down.
- If the Reader software freezes or becomes unresponsive, press **Power** for more than 7 seconds to shut down the Reader. The Reader emits two tones as it shuts down.

Hold: A rectangular slider with ridges on the top edge of the Reader. **Hold** locks the other Reader buttons so that button presses have no impact. Slide **Hold** toward the **Shoot** button to lock the Reader buttons. Slide **Hold** away from the **Shoot** button to unlock the buttons.

Controls for Capturing and Playing Text

Shoot: A large, flat button located on the angled corner of the Reader. Press this button to enter Shoot mode. Press it again to capture text images.

Play: A diagonal, raised button just above the upper-right corner of the display screen. After selecting a file from the menu, press **Play** to listen to the file. During playback, press **Play** at any time, to pause the playback.

Volume Up and **Volume Down**: Two round buttons on the right edge of the Reader. The **Volume Up** button has a raised plus (+) symbol. The **Volume Down** button has a raised minus (-) symbol. Use these buttons to adjust the volume.

Controls for Navigating in Menus and Files

OK: A round, recessed button with a raised edge, to the right of the display screen. Press **OK** to make a selection or confirm an action. For example, to play a file in the **Texts** menu, select the file name in the menu, then press **OK**. This action opens the file and begins playing it. When you pause a text reading, you can press **OK** for more than one second to have the Reader spell a word aloud.

Navigation Arrows (Up, Down, Left, and Right): Four round, raised buttons surrounding the **OK** button. Press these buttons to navigate in menus and text. For example, in the **Home** menu with **Library** selected, press the down arrow three times to highlight the **Settings** menu.

For more information about the navigation arrow buttons, refer to the sections titled **Navigating in a Text e-Book** and **Audio Playback Navigation** in Chapter 5 of the Reader User Manual.

Back: A square, raised button below the **Play** button. Press **Back** to return to the previous menu or to cancel an action. If you lose your place at any time, press and hold **Back** for two seconds to return to the **Home** menu.

Controls for Viewing a Text Image

The text image is the image of your printed material that you see in the display screen when you capture the text. The Reader saves this image, so that you can view it whenever necessary as you listen to the playback. For example, you might

want to view a diagram or picture on one of the pages. When the playback moves to a subsequent page, the image of the new page appears. You can enlarge the image to get a better look at any portion of it.

View Toggle: A horizontal, oval button in the middle of the three buttons at the lower left of the display screen. As you listen to text, press **View Toggle** to switch from viewing the words that are playing, to viewing the text image.

Zoom Out and **Zoom In:** Round, raised buttons to the left and right of the **View Toggle** button. The left button is **Zoom Out**, and the right button is **Zoom In**. You can use the **Zoom In** and **Zoom Out** buttons in the following ways:

- To increase or decrease the size of text on the display screen, as you listen to text.
- To zoom in or out on a text image on the display screen. When you are zoomed in on the image, press the arrow buttons to view different portions of the enlarged image.

Shortcut Controls

Options: A square, raised button below and to the left of the navigation arrow buttons. **Options** displays a menu of actions you can take. The menu and the actions change, depending on the feature you are using. For example, if you highlight a text file in the **Texts** menu and press **Options**, the **Options** menu allows you to add the file to a category, get file information, delete the file, rename it, or save it as an audio file. If you press **Options** as you listen to the file, the menu provides all those options, and also lets you go to a specific heading or page in the file.

Location: An oval, raised button below the **Options** button, and the left-most of the three buttons in the lower right corner of the Reader face. When playing a text e-Book, or when the book title is highlighted in a menu, press the **Location** button to access the **Location** menu, which includes two options: **Go to Page** and **Go to Heading**. Use these options to navigate within the e-Book.

Voice Speed: A vertical, oval button in the middle of the three buttons at the lower right of the Reader face. Press **Voice Speed** to access a menu that lets you speed up or slow down the playback.

Guide: A round, raised button on the right of the **Voice Speed** button. Press the **Guide** button to:

- Open the **Device Status** screen to view the current date and time, check the battery's charge, and see the Reader's storage capacity.
- Access the **Help** menu to play an introduction to the Reader, or to play the Quick Start Guide or the User Manual. The Quick Start Guide and User Manual are text e-Books that you can navigate as you do other e-Books. For more information about navigation, refer to the section titled **Navigating in a Text e-Book** in Chapter 5 of the User Manual. The **Help** menu also includes the **About** option, which displays and plays your software version, Reader serial number and product code, and keys for accessing third-party content, if you have any.
- Restore the Reader's factory settings and remove any custom settings, such as the display theme, voice speed and voice gender. To restore factory settings, press **Guide** for approximately 20 seconds.

For More Information

You can listen to this Quick Start Guide and the Reader User Manual on the CD that comes with your Reader, or by accessing Help files on the Reader itself. The Help files also contain a short introduction to the Reader.

To access the Reader's Help files from the **Home** menu, select **Help**, and press **OK**. The **Help** menu appears.

As you play a text or audio file, you can also access Help by pressing the **Guide** button at the lower right of the Reader face. On the **Guide** screen, select **Go to Help Menu**. Press **OK**. The **Help** menu appears. Select **Introduction** to play a quick introduction to the Reader. Select **Quick Start Guide** to play this guide, or select **User Manual** to access a list of topics in the manual. Press **OK**.

NOTE: Be sure to press **OK**, not **Play**, to hear the **Quick Start Guide** or **User Manual** Help topics.

If you select **Introduction** the introduction to the Reader begins playing immediately. If you select **Quick Start Guide**, the **Quick Start Guide** screen appears, and text playback begins.

If you select **User Manual**, the **User Manual** screen appears, displaying a list of help topics. Select a topic and press **OK**. A list of sub-topics appears. Most sub-topic lists begin with the **Play All** option. To play all of the sub-topics, select **Play All** and press **OK**. To hear an individual sub-topic, scroll down to that topic and press **OK**.

When you finish listening to Help, press the **Back** button.

Frequently Asked Questions

Question: How can I get the camera to focus properly?

Answer: To ensure proper focus, hold the Reader at approximately nose level when you are seated in front of the printed material. If the Reader is too close or too far from the text being captured, the results will vary. Be sure to hold the Reader still when capturing an image. It also helps to ensure that text or an image appears in the center of the display screen. The camera uses that quadrant to adjust focus.

Question: How can I prevent the flash from producing a glare on the page?

Answer: Try holding the Reader with the top edge tipped slightly toward you, and the camera pointed at the center of your text. This position directs the flash away from the lens and reduces glare. Also, if you are in a well lit space, you can temporarily turn off the flash. And finally, be sure there is no excess light on the page. Keep the Reader away from overhead lights, desk lamps or windows.

Question: I backed my Reader files up on a computer but it is difficult to find a file in the backup folder on the computer. How can I make files easier to find?

Answer: When you back up files, copy the files as a group so that they are organized in the same way on the computer as they are on the Reader. For example, to find all the files in a book, copy the book folder from the Reader to the computer.

Question: Sometimes the playback sounds garbled, or mispronounces words or numbers. What causes these issues?

Answer: Text-to-speech (TTS) software has improved in recent years, but it hasn't achieved perfection. As a result, you can encounter differences between the printed text and the audio playback. When differences occur, you can press **View Toggle** to view the image of the page you are playing, or spell out any words that are unclear, or request assistance from another person.

Here are examples of some differences that can occur:

Mathematical, currency, and scientific symbols can be misinterpreted. The Reader is designed to convert text into speech, and is not intended for reading primarily mathematical, scientific, or financial data. In time stamps, such as 9:00, the colon can be ignored, so that the number reads as nine hundred. Similarly, in currency, the decimal or comma separator can be ignored. In some fonts, the numeral 1 can be interpreted as the lower case letter L.

Abbreviations, such as PA for Pennsylvania, might not be interpreted correctly. Latinates, such as e.g. and etc., might not be translated from the Latin.

Question: Why is the time shown as 13:00 instead of 1:00?

Answer: The **Date and Time** setting is set to a 24-hour clock. To display the time in 12-hour format, go to the **Basics** menu, and select **Date and Time**. Highlight **Set Time**, without opening it. Press the **Options** button. On the **Time Format** menu, select **12-Hour Clock**, and press **OK**.

Question: Will I damage the Reader by leaving it plugged in?

Answer: You cannot over-charge the Reader by leaving it plugged in for an extended period. However, you should unplug the Reader if there is danger of an electrical storm, to prevent damage to the Reader.

Question: I turned off the **Read Menus** option, but later I found it had been turned on again. Why did this happen?

Answer: You might have turned off the display screen. You cannot turn off both the display screen and the **Read Menus** option. If you turn off menu reading, then turn off the display screen, the menu reading option turns on again.

Question: When I use my earphones, sometimes the sound comes through the speakers. Other times, it comes through the earphones but it sounds muted. Why does this happen?

Answer: It could be that the earphones aren't completely plugged in. Be sure to insert them all the way into the earphone socket, to ensure good quality sound.



United States & Canada



5 9 - 8 8 5 4 8 6 - 0 1

Copyright © 2010, Intel Corporation. All rights reserved. Intel and the Intel logo are trademarks of Intel Corporation in the U.S. and other countries. Other names and brands may be claimed as the property of others.

Document number: RSLT-C-0009
Revision: 3.0
Effective date: July 28, 2010